



1 Bedroom  
Woodley Crescent, NW2

 **Portland**  
Trusted, every step of the way

£400,000  
Leasehold

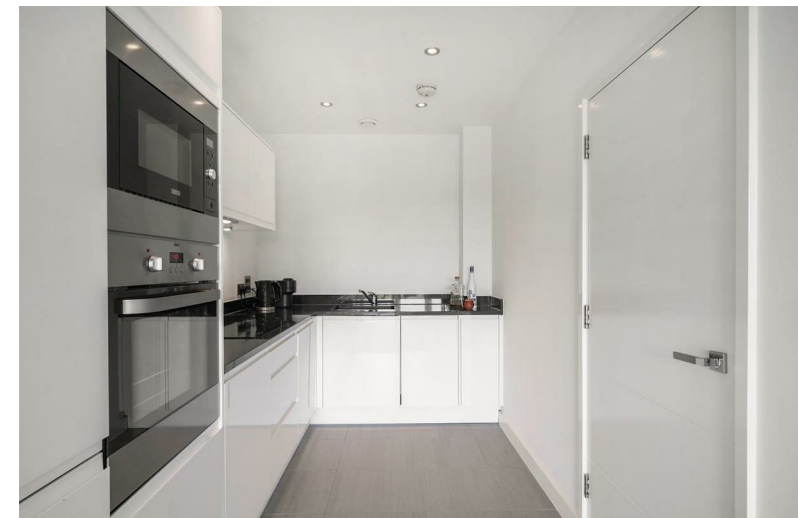
Offered to the market in immaculate condition, is a modern one bedroom apartment in a popular newly built development.

Presented in stunning condition, the flat offers a fully integrated open plan kitchen with excellent storage and bright views. The living area then continues onto to a well-proportioned balcony perfect for entertaining. The property also boasts a large double bedroom with room for plenty of storage.

Coleby House benefits a secure video entry system for guests, an accessible lift as well as privately owned off-street parking and charming communal gardens for the residents.

This excellent home is located in one of North West London's most desirable areas, and is only moments away from Cricklewood Station as well as being close to a plethora of local amenities including a new David Lloyd gym and local independent restaurants and shops. In addition the property is within walking distance to West Hampstead and Hampstead Heath.

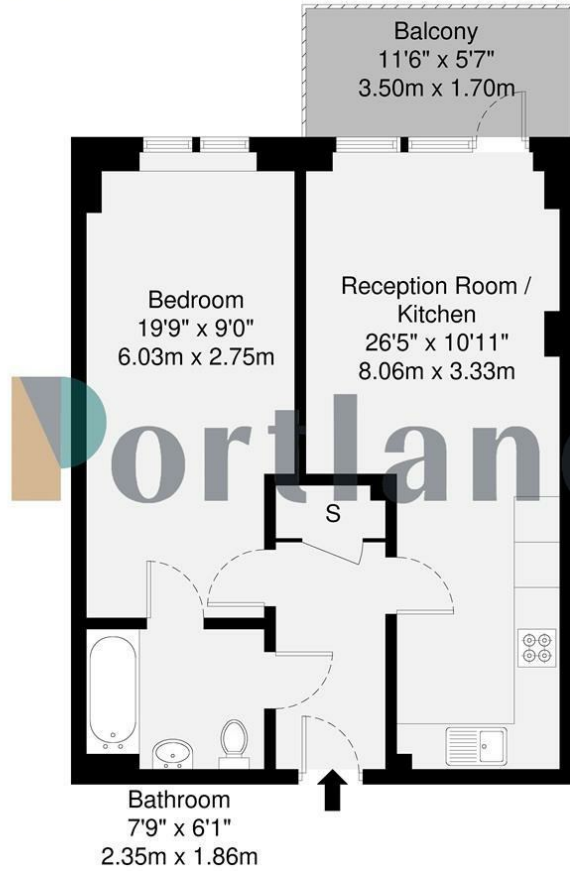
- Secure purpose built development
- Off street parking available
- Communal gardens
- Over 500 square feet of accommodation
- Close to Thameslink with excellent access to St Pancras International
- Bright views flooded with natural light
- Private balcony
- Newly built











GROSS INTERNAL AREA (GIA)  
The footprint of the property  
51.1 sq m / 550 sq ft

TOTAL STORAGE SPACE  
Storage and wardrobe total area  
1 sq m / 10 sq ft

EXTERNAL FEATURES  
Garden, Balcony, Terrace, Verandah etc.  
5.9 sq m / 63 sq ft

RESTRICTED HEAD HEIGHT  
Limited use area under 1.5m  
0.0 sq m / 0.0 sq ft

Disclaimer: Floorplan measurements are approximate and are for illustrative purposes only. While we do not doubt the floorplan accuracy and completeness, you or your advisors should conduct a careful, independent investigation of the property in respect of monetary valuation.



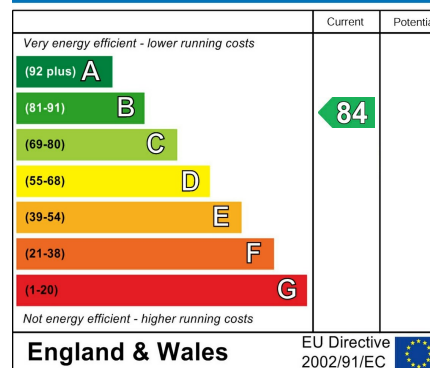
Trusted, every step of the way

90 Walm Lane, London, NW2 4QY  
020 8451 9844

info@portlandestateagents.co.uk  
www.portlandestateagents.co.uk



#### Energy Efficiency Rating



#### Environmental Impact (CO<sub>2</sub>) Rating

